

ESRA Locations

Short courses – 17th July 2017



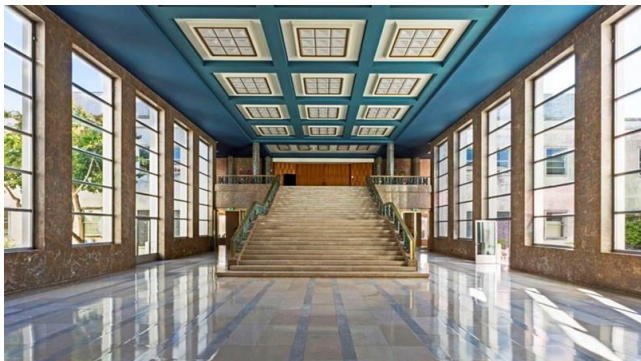
The short courses will take place at Instituto de Ciências Sociais, located in Av. Professor Aníbal Battencourt nº 9, Lisbon.

The nearest subway station is Entrecampos (Yellow Line).

Click on the map to get the directions.



Conference Welcome Reception – 17th July 2017



The Conference Welcome Reception will take place at Aula Magna, in Reitoria da Universidade de Lisboa.

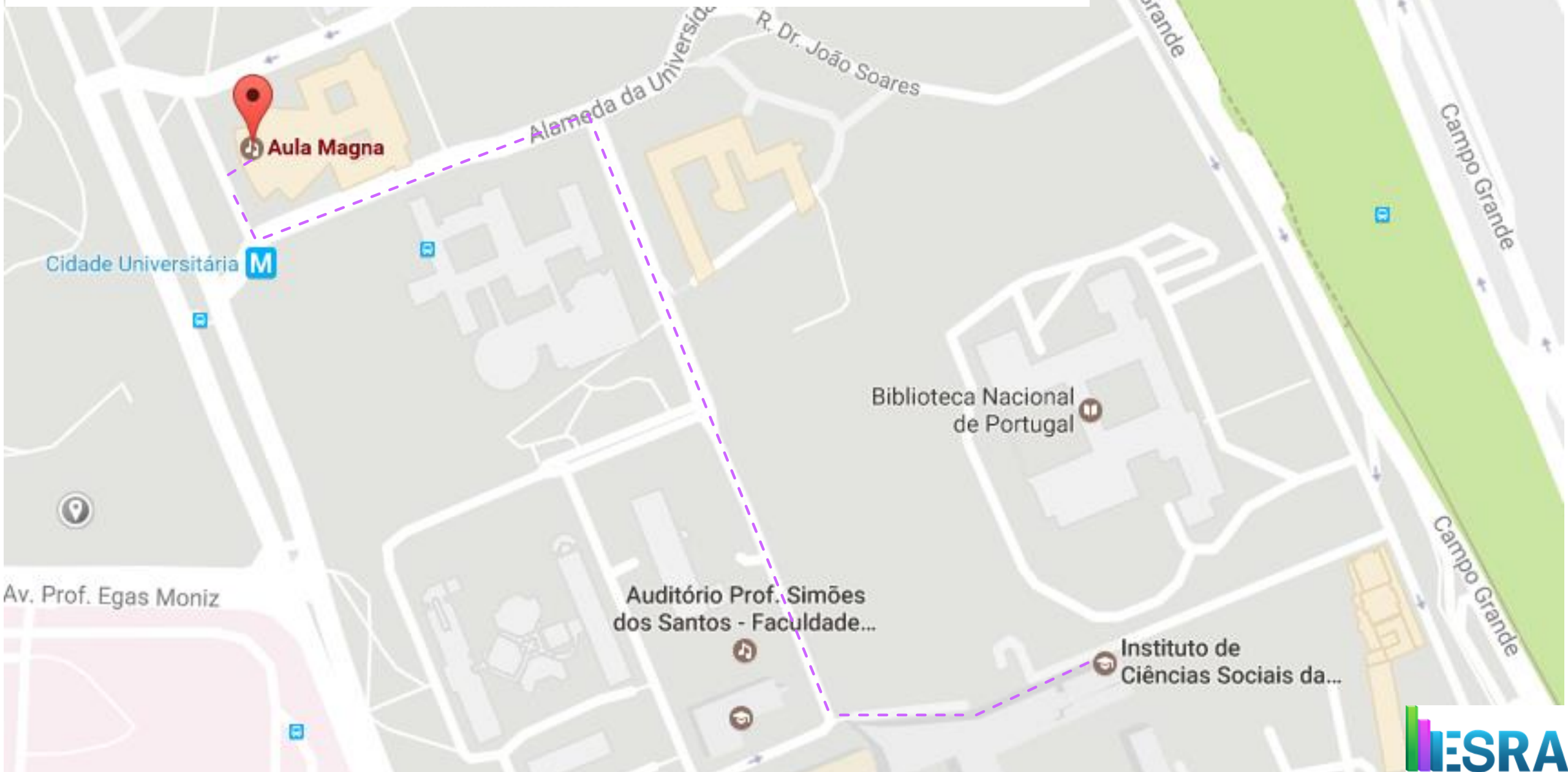
The address is Alameda da Universidade, Lisboa.

Click on the map to get the directions.

If you are attending to the short courses, please note that Instituto de Ciências Sociais is very near to the Aula Magna – only a fifteen minutes' walk. See the next page for a full itinerary.



Way to go from ICS (short courses) to the Welcome Reception at Aula Magna



Conference Sessions – 18th to 21st July

The remaining activities of the conference, namely the sessions will all take place at ISEG – Lisbon School of Economics & Management.

As mentioned in the file “How to get to Lisbon & ISEG”, the entrance to ISEG will be through Rua das Francesinhas, Lisbon. The nearest subway station is Rato (Yellow Line). Click on the map to get the directions.



Guided tour to the Orient Foundation Museum

& Conference dinner – 20th July 2017



The Conference dinner will take place at the Orient Foundation Museum.

For those you will not only attend to the conference dinner, but also to the guided visit you'll have the privileged to learn more about the link between West and East civilizations.

If you want to know more about the museum click on the following link: <http://www.museudoorientep.pt/>

You will be pleased to know that after the dinner there will be a party on the terrace, under the Lisbon lights.

See the next page for a full itinerary from ISEG to the Orient Foundation Museum.



We look forward to see you in Lisbon!

